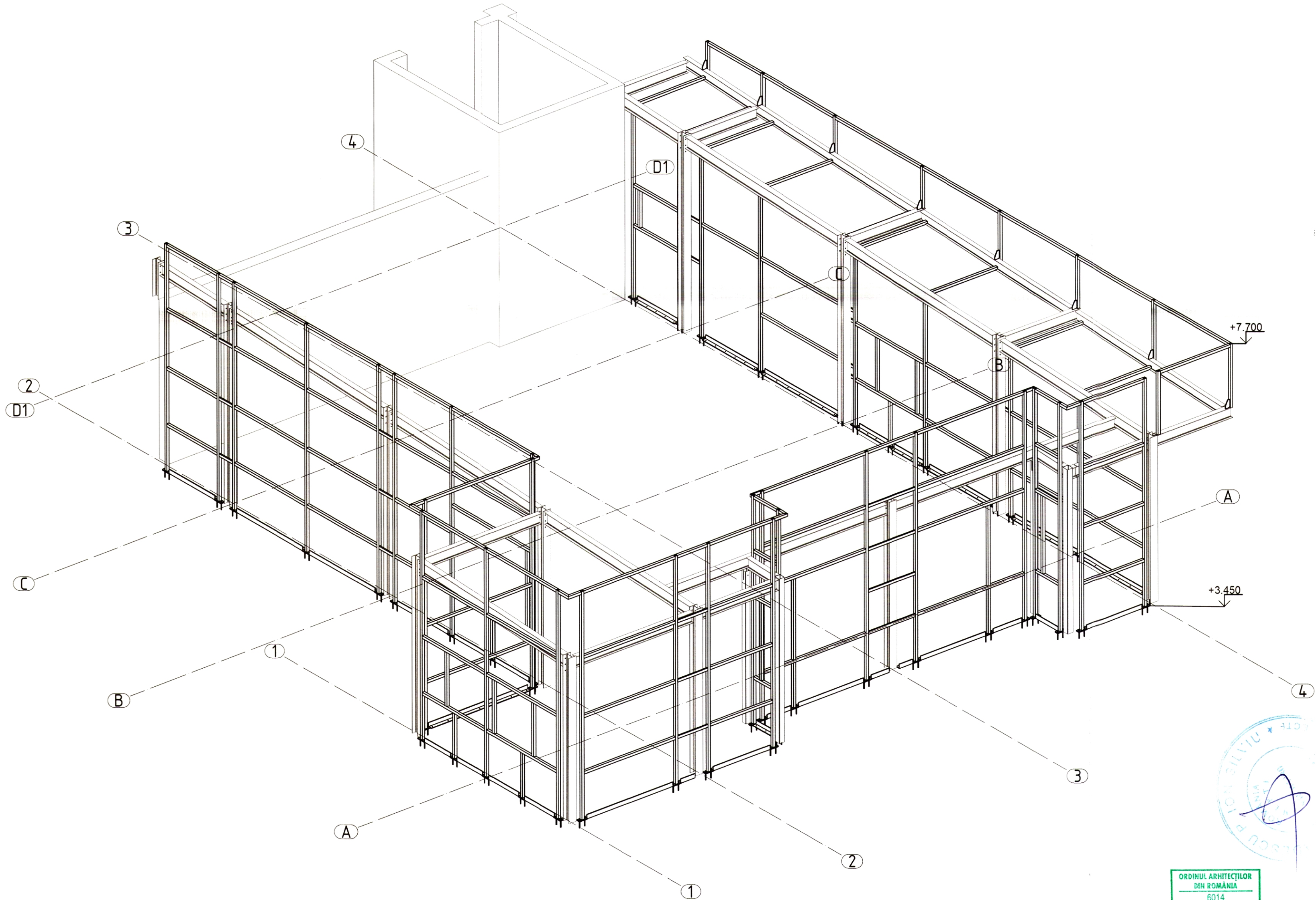
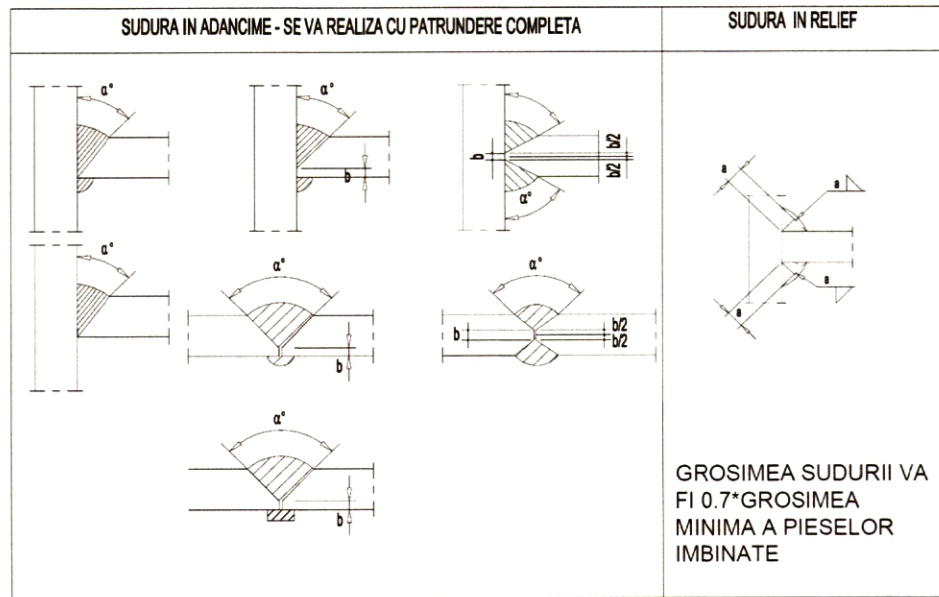


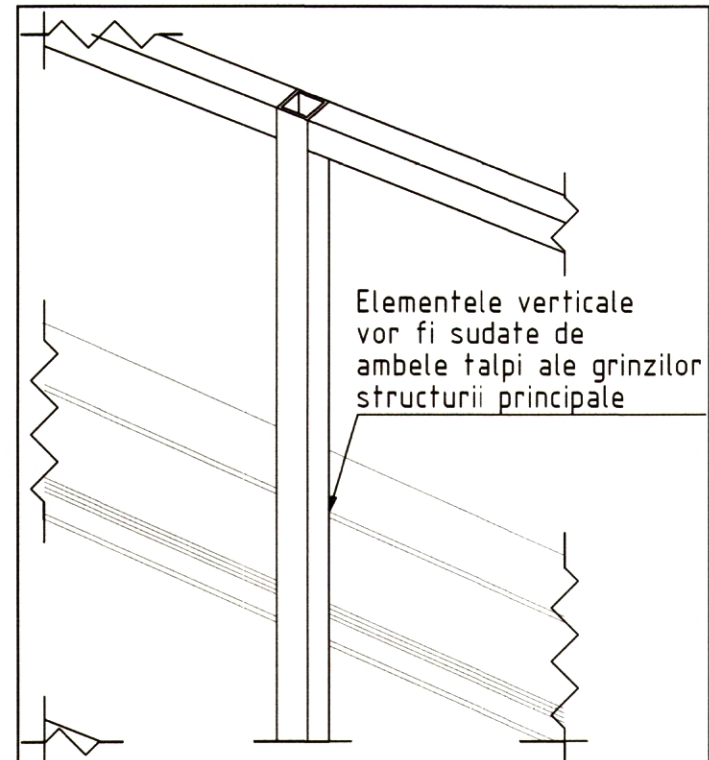
Cantitate	Denumire	Descriere	Lungime	Otel	Greutate/buc.	Greutate tot.
			(mm)		(kg)	(kg)
Grinzi						
27	PI1000	RHS50x5	4.235	S235	29	783.3
11	PI1001	RHS50x5	1.598	S235	10.9	120.4
8	PI1002	RHS50x5	1.325	S235	9.1	72.6
8	PI1003	RHS50x5	600	S235	4.1	32.9
6	PI1004	RHS50x5	1.450	S235	9.9	59.6
6	PI1005	RHS50x5	1.000	S235	6.8	41.1
6	PI1006	RHS50x5	835	S235	5.7	34.3
5	PI1007	RHS50x5	2.250	S235	15.4	77.1
5	PI1008	RHS50x5	1.850	S235	12.7	63.4
4	PI1009	RHS50x25x5	1.000	S235	4.3	17.2
4	PI1010	RHS50x25x5	346	S235	1.5	6
4	PI1011	RHS50x5	2.275	S235	15.6	62.3
4	PI1012	RHS50x5	2.175	S235	14.9	59.6
4	PI1013	RHS50x5	2.100	S235	14.4	57.5
4	PI1014	RHS50x5	1.950	S235	13.4	53.4
4	PI1015	RHS50x5	1.863	S235	12.8	51
4	PI1016	RHS50x5	1.843	S235	12.6	50.5
4	PI1017	RHS50x5	1.650	S235	11.3	45.2
4	PI1018	RHS50x5	1.500	S235	10.3	41.1
4	PI1019	RHS50x5	1.300	S235	8.9	35.6
3	PI1020	RHS50x25x5	645	S235	2.8	8.3
3	PI1021	RHS50x25x5	370	S235	1.6	4.8
3	PI1022	RHS50x25x5	350	S235	1.5	4.5
3	PI1023	RHS50x5	280	S235	1.9	5.8
2	PI1024	L80x8	1.380	S235	13.3	26.7
2	PI1025	L80x8	1.205	S235	11.6	23.4
2	PI1026	L80x8	905	S235	8.7	17.5
2	PI1027	L80x8	780	S235	7.5	15.1
2	PI1028	L80x8	680	S235	6.6	13.1
2	PI1029	L80x8	580	S235	5.6	11.2
2	PI1030	RHS50x25x5	525	S235	2.3	4.5
2	PI1031	RHS50x25x5	351	S235	1.5	3
2	PI1032	RHS50x25x5	200	S235	0.9	1.7
2	PI1033	RHS50x25x5	35	S235	0.2	0.3
2	PI1034	RHS50x5	2.045	S235	14	28
2	PI1035	RHS50x5	1.799	S235	12.3	24.6
2	PI1036	RHS50x5	1.794	S235	12.3	24.6
2	PI1037	RHS50x5	1.750	S235	12	24
2	PI1038	RHS50x5	1.749	S235	12	24
2	PI1039	RHS50x5	1.180	S235	8.1	16.2
2	PI1040	RHS50x5	1.175	S235	8	16.1
2	PI1041	RHS50x5	275	S235	1.9	3.8
2	PI1042	RHS50x5	190	S235	1.3	2.6
1	PI1043	L80x8	2.130	S235	20.6	20.6
1	PI1044	L80x8	1.925	S235	18.6	18.6
1	PI1045	L80x8	1.830	S235	17.7	17.7
1	PI1046	L80x8	1.743	S235	16.8	16.8
1	PI1047	L80x8	1.723	S235	16.6	16.6
1	PI1048	L80x8	1.674	S235	16.2	16.2
1	PI1049	L80x8	1.630	S235	15.7	15.7
1	PI1050	L80x8	1.629	S235	15.7	15.7
1	PI1051	L80x8	1.380	S235	13.3	13.3
1	PI1052	L80x8	1.330	S235	12.8	12.8
1	PI1053	L80x8	1.180	S235	11.4	11.4
1	PI1054	L80x8	1.055	S235	10.2	10.2
1	PI1055	L80x8	755	S235	7.3	7.3
1	PI1056	L80x8	754	S235	7.3	7.3
1	PI1057	L80x8	605	S235	5.8	5.8
1	PI1058	L80x8	505	S235	4.9	4.9
1	PI1059	L80x8	380	S235	3.7	3.7
1	PI1060	L80x8	305	S235	2.9	2.9
1	PI1061	L80x8	280	S235	2.7	2.7
1	PI1062	RHS50x5	3.562	S235	24.4	24.4
1	PI1063	RHS50x5	3.501	S235	24	24
1	PI1064	RHS50x5	3.472	S235	23.8	23.8
1	PI1065	RHS50x5	3.395	S235	23.3	23.3
1	PI1066	RHS50x5	3.290	S235	22.5	22.5
1	PI1067	RHS50x5	3.270	S235	22.4	22.4
1	PI1068	RHS50x5	3.178	S235	21.8	21.8
1	PI1069	RHS50x5	3.085	S235	21.1	21.1
1	PI1070	RHS50x5	3.065	S235	21	21
1	PI1071	RHS50x5	2.975	S235	20.4	20.4
1	PI1072	RHS50x5	2.885	S235	19.8	19.8
1	PI1073	RHS50x5	1.990	S235	13.6	13.6
1	PI1074	RHS50x5	1.985	S235	13.6	13.6
1	PI1075	RHS50x5	1.965	S235	13.5	13.5
1	PI1076	RHS50x5	1.960	S235	13.4	13.4
1	PI1077	RHS50x5	1.490	S235	10.2	10.2
1	PI1078	RHS50x5	1.400	S235	9.6	9.6
1	PI1079	RHS50x5	1.257	S235	8.6	8.6
1	PI1080	RHS50x5	1.054	S235	7.2	7.2
1	PI1081	RHS50x5	980	S235	6.7	6.7
1	PI1082	RHS50x5	837	S235	5.7	5.7
1	PI1083	RHS50x5	780	S235	5.3	5.3
1	PI1084	RHS50x5	745	S235	5.1	5.1
1	PI1085	RHS50x5	700	S235	4.8	4.8
1	PI1086	RHS50x5	670	S235	4.6	4.6
1	PI1087	RHS50x5	645	S235	4.4	4.4
1	PI1088	RHS50x5	370	S235	2.5	2.5
1	PI1089	RHS50x5	350	S235	2.4	2.4
1	PI1090	RHS50x5	300	S235	2.1	2.1
1	PI1091	RHS50x5	125	S235	0.9	0.9
1	PI1092	RHS50x5	120	S235	0.8	0.8
226	TOTAL				TOTAL	2.667.50
Placi						
44	PI1093	PL 15x70x170	170	S235	1.4	61.7
8	PI1094	PL 10x90x150	150	S235	0.9	6.8
52	TOTAL				TOTAL	68.5
GREUTATE TOTALA			2.736	kg		
GRUND+ELECTROZI(6%)			137	kg		
TOTAL GENERAL			2.873	kg		



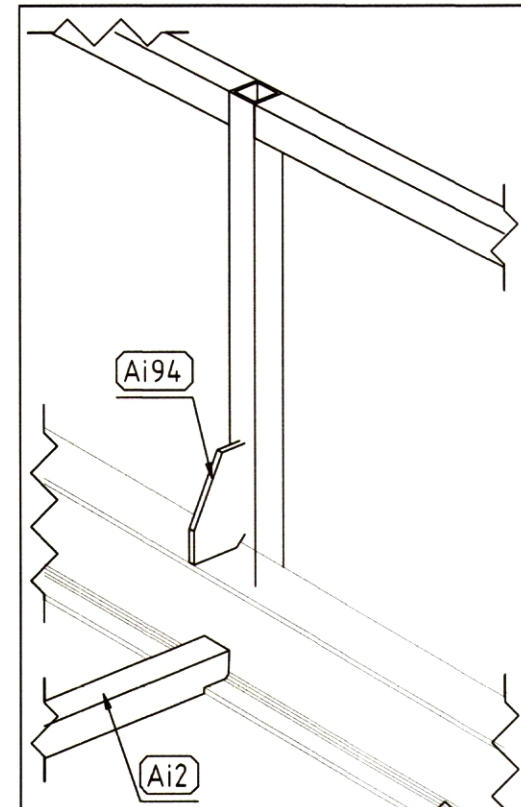
Vedere 3D structura inchideri



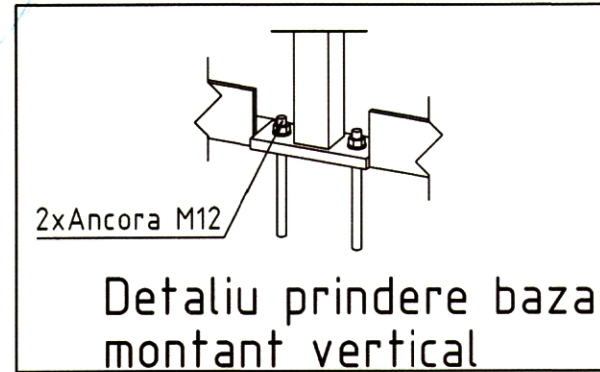
- CONFORM "NORMATIVULUI PRIVIND CALITATEA IMBINARILOR SUDATE DIN OTEL A CONSTRUCTIILOR CIVILE, INDUSTRIALE SI AGRICOLE" - C150/99:
 - CATEGORIA DE EXECUTIE A ELEMENTELOR ESTE "B" CONFORM PUNCT. 2.14b;
 - CONDITIILE DE CALITATE PENTRU LAMINATE DIN OTEL, PENTRU IMBINARILE SUDATE SI PENTRU MATERIALELE DE SUDARE SE VOR INCADRA IN NIVELUL "B" DE ACCEPTARE CONFORM TABELELOR 1, 2 SI 4;
 - OPERATIILE DE DEBITARE A PIESELOR, PRECUM SI CELE DE PRELUCRARE A MARGINILOR LIBERE SI A ROSTURILOR PENTRU SUDARE TREBUIE SA RESPECTE CONDITIILE PREVAZUTE IN TABELUL 3, DIFFERENTIATE PE NIVELURILE DE ACCEPTARE A IMBINARILOR SUDATE;
- CLASA DE ABATERI LIMITA LA DIMENSIUNILE IMBINARILOR SUDATE ESTE "B" CONFORM SR EN ISO-13920/98;
- CONDITIILE TEHNICE DE CALITATE VOR RESPECTA PREVEDERILE STAS 767/0-88;
- PROTECTIA ANTICOROZIVA A STRUCTURII METALICE SE VA REALIZA PRIN VOPSIRE



Detaliu prindere montant vertical de grinda structurii principale



Detaliu prindere atic la capatul consolei

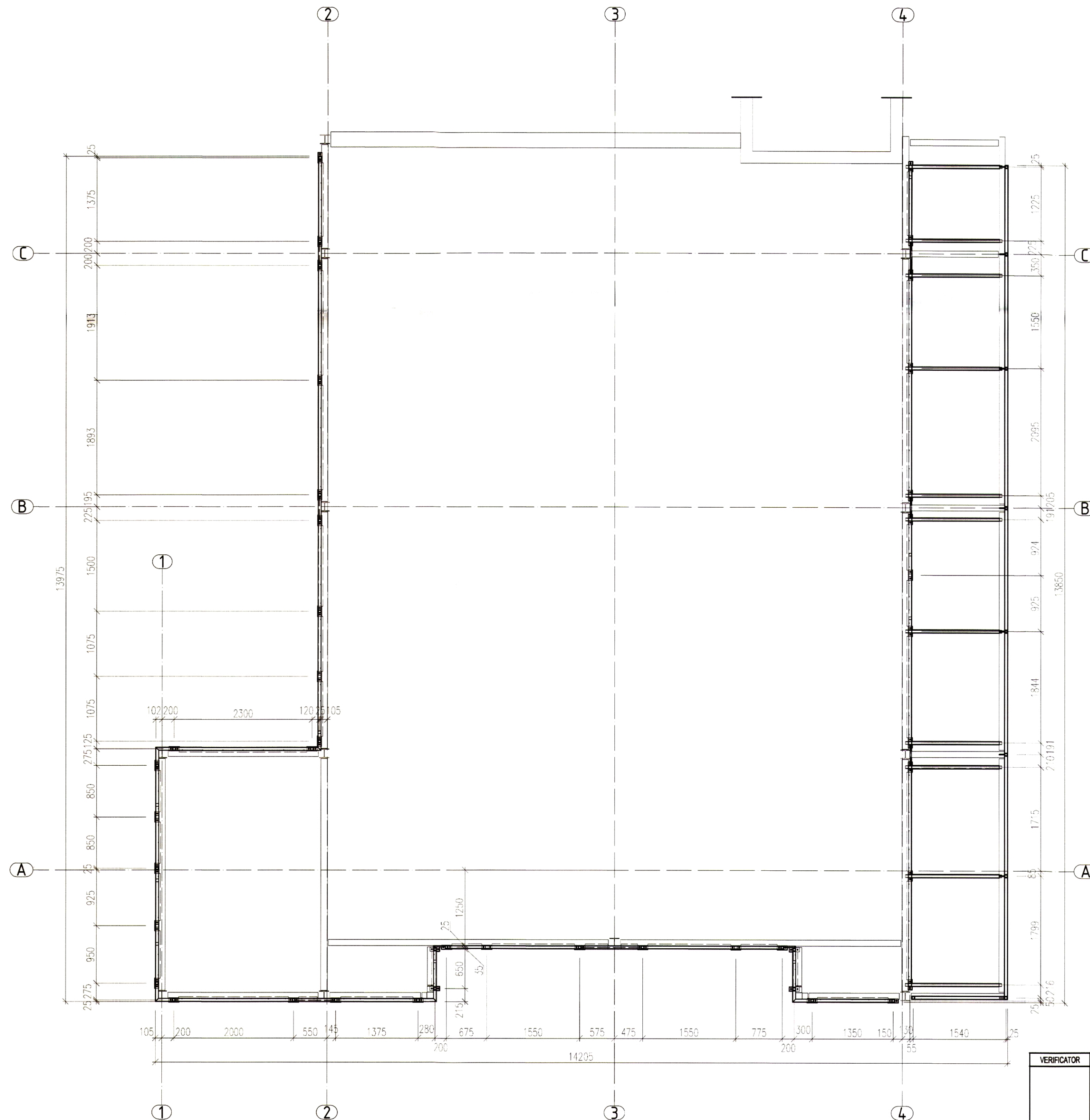


MATERIALE:
Otel - SR-EN 10025 - 2 : 2006
S235

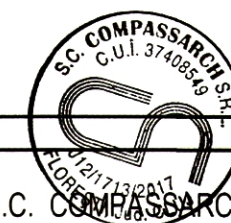
Organe de asamblare: COMPASSARCH S.R.L. (seal) Organe de cantitati

VERIFICATOR	CERINTA A	REFERAT NR./DATA	PROIECT NR.
S.C. COMPASSARCH S.R.L.	CUI 37408549 12/17/2017	Beneficiar: CONSILIUL JUDETEAN ARGES	128/2020
NUME	SEMNATURA	SCARA 1:50 1:10	Titlu Proiect: EXTINDERE, MODERNIZARE SI DOTARE SPAȚIU DE URGENTA SPITALUL DE PEDIATRIE PITESTI
SEF PROIECT	arh. Mihai Grajdeanu	Amplasament: sc. Dacia nr.1, 11000 Pitesti, Jud. Argeș	Format A2, csi
PROIECTAT	ing. Sotariu Ciprian Sebastian	2020	Titlu planșei: VEDERE 3D STRUCTURA METALICA INCHIDERI
DESENAT	ing. Vlad Andrei Antonov		R2.12

DOCUMENTUL DESENULUI REPREZINTA PROPRIETATEA INTELLECTUALA A COMPANIEI S.C. COMPASSARCH S.R.L. TRANSFERATA SAU REPRODUCUTA IN TOTAL SAU PARȚIAL, FARA APROBAREA SCRISA A COMPANIEI S.C. COMPASSARCH S.R.L. SE SANCTIONEAZA CONFORM LEGII NR. 8/1998



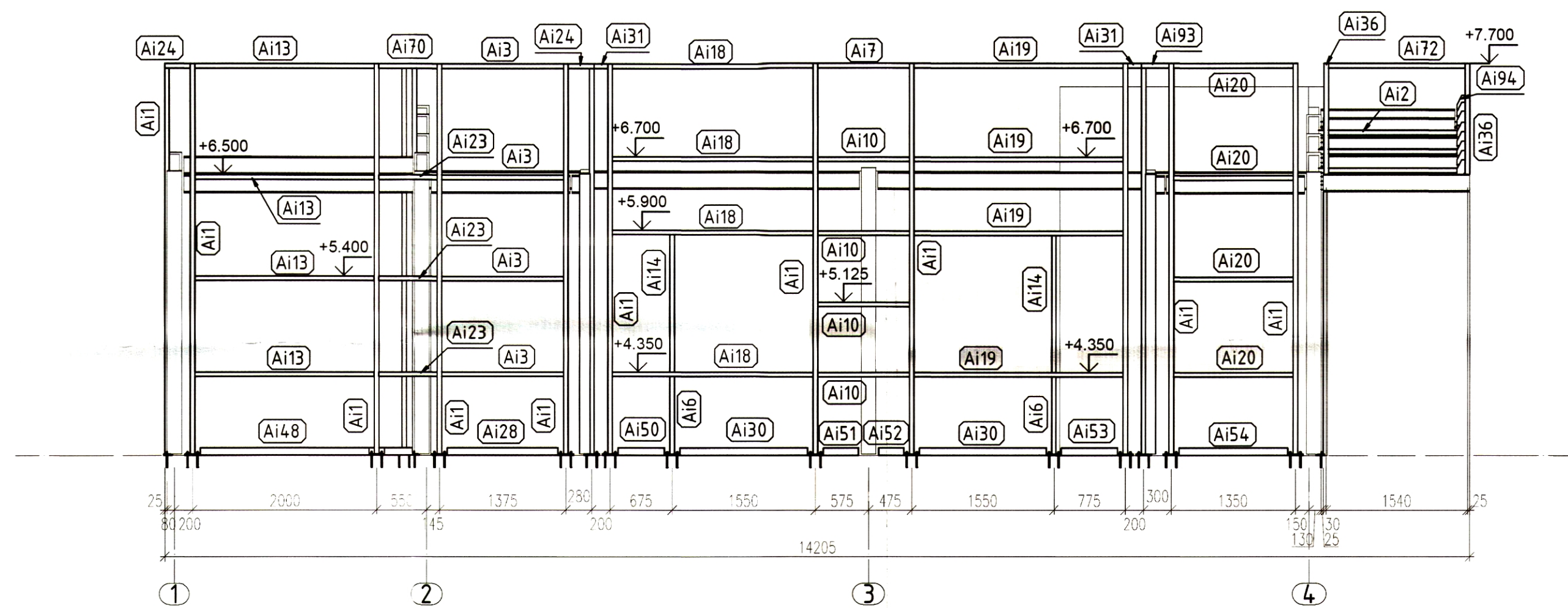
Plan structura inchideri



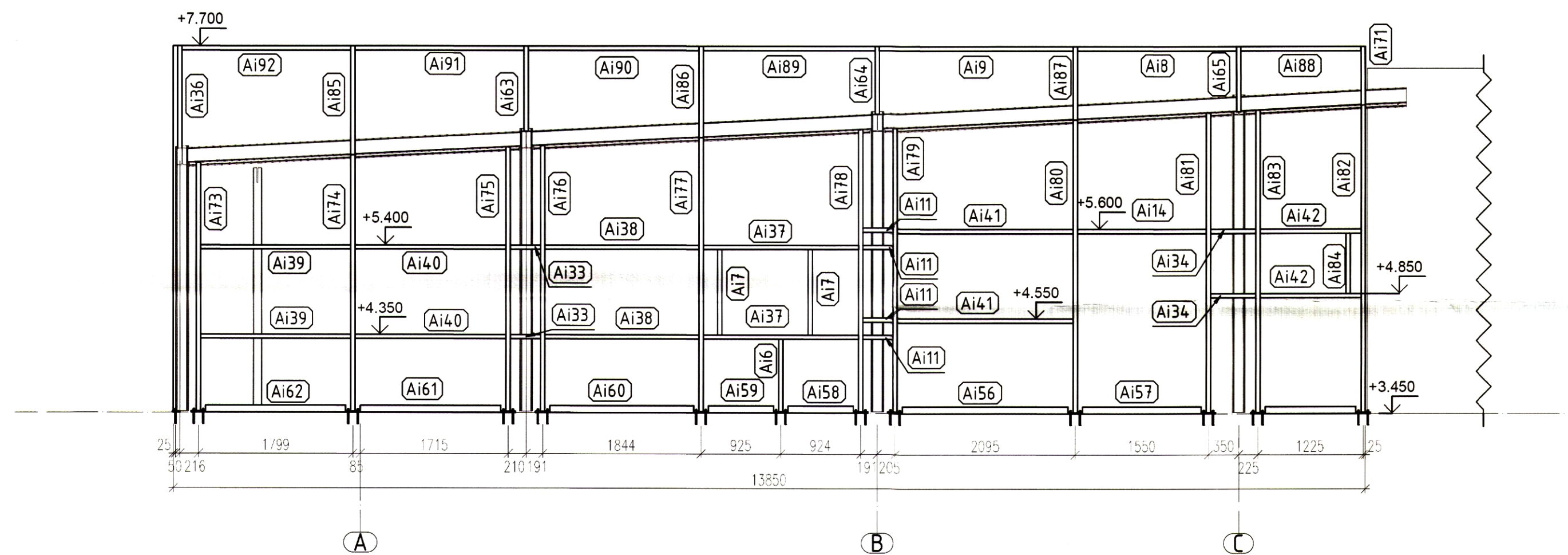
Clasa de importanta: I
Categoriza de importanta: B
Grad de rezistenta la foc: II

VERIFICATOR		CERINTA A	REFERAT NR./DATA	
S.C. COMPASSARCH S.R.L.		CUI 37408549 12/17/13/2017	Beneficiar: CONSILIUL JUDETEAN ARGES	
NUME		SEMNATURA	SCARA 1:50	PROIECT NR. 128/2020
SEF PROIECT	arh. Mihai Grajdeanu		Titlu Proiect: EXTINDERE, MODERNIZARE SI DOTARE SPATII DE URGENTA SPITALUL DE PEDIATRIE PITESTI	Faza PTH+DE
PROIECTAT	ing. Scutaru Ciprian Sebastian		Amplasament: str. Dacia, nr. 1, zona Pitesti, jud. Arges	Format A2
DESENAT	ing. Vlad Andrei Antonae		Titlu plansei: PLAN STRUCTURA METALICA INCHIDERI	R2.13

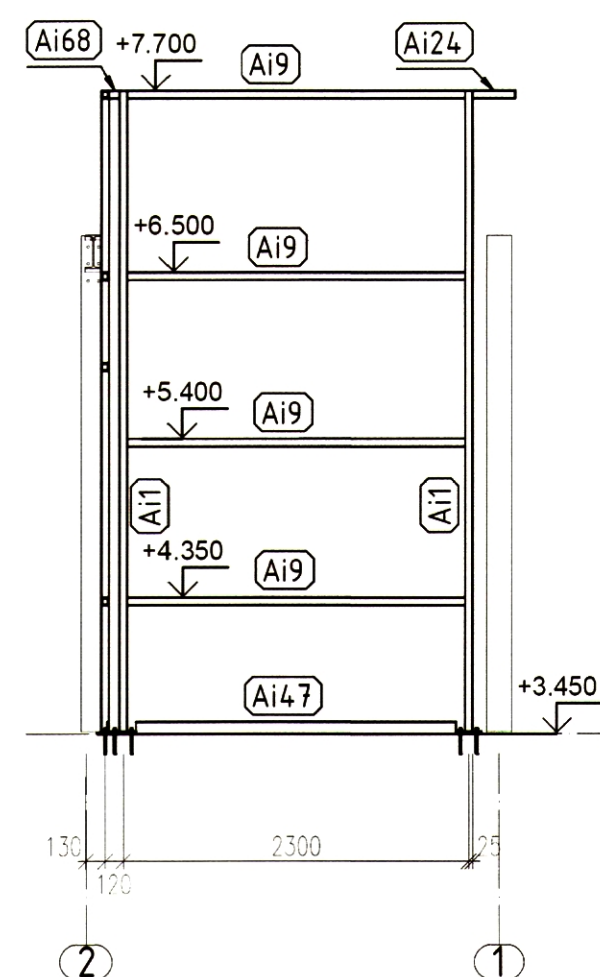
DOCUMENTUL DESENUL REPREZINTA PROPRIETATE INTELECTUALA A COMPANIEI S.C. COMPASSARCH S.R.L. TRANSMITEREA SAU REPRODUCEREA INTEGRALA SAU PARTIALA FARA APROBAREA SCRISA A COMPANIEI S.C. COMPASSARCH S.R.L. SE SANCTIONEAZA CONFORM LEGII NR. 8/1996



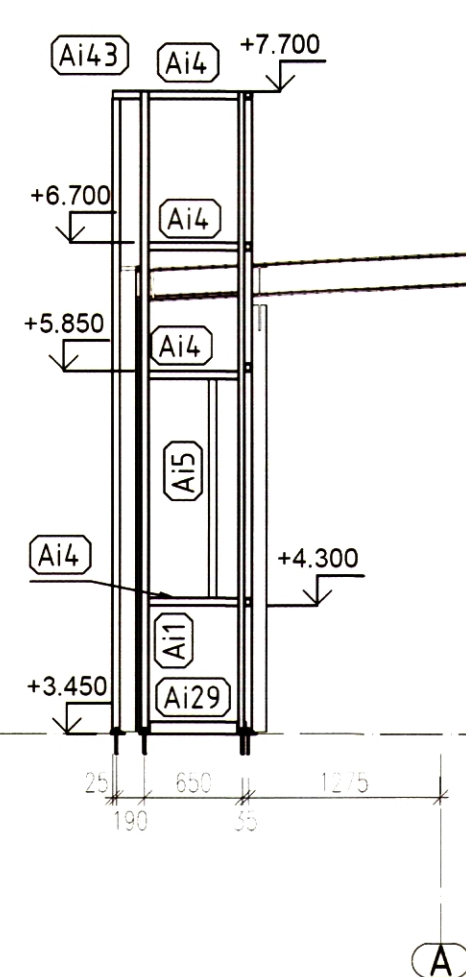
Vedere B-B



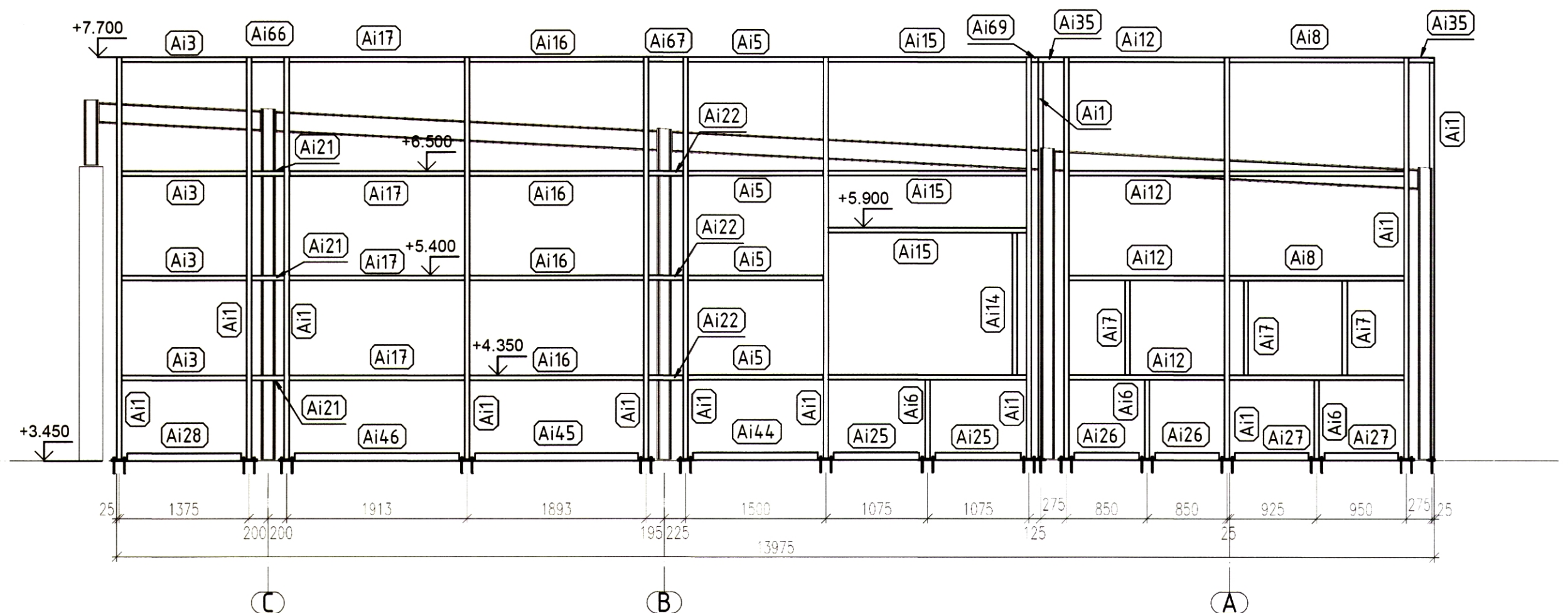
Vedere C-C



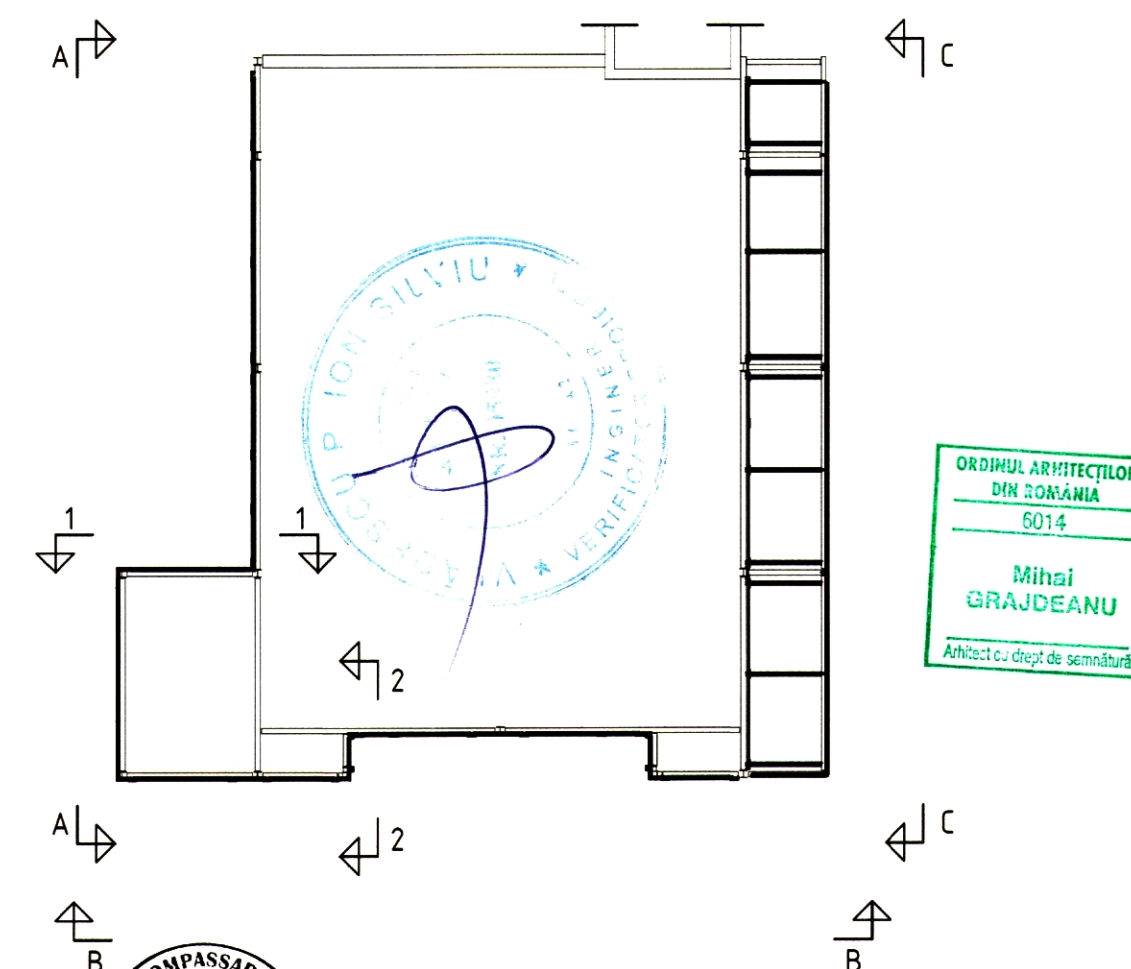
Sectione 1-1



Sectione 2-2

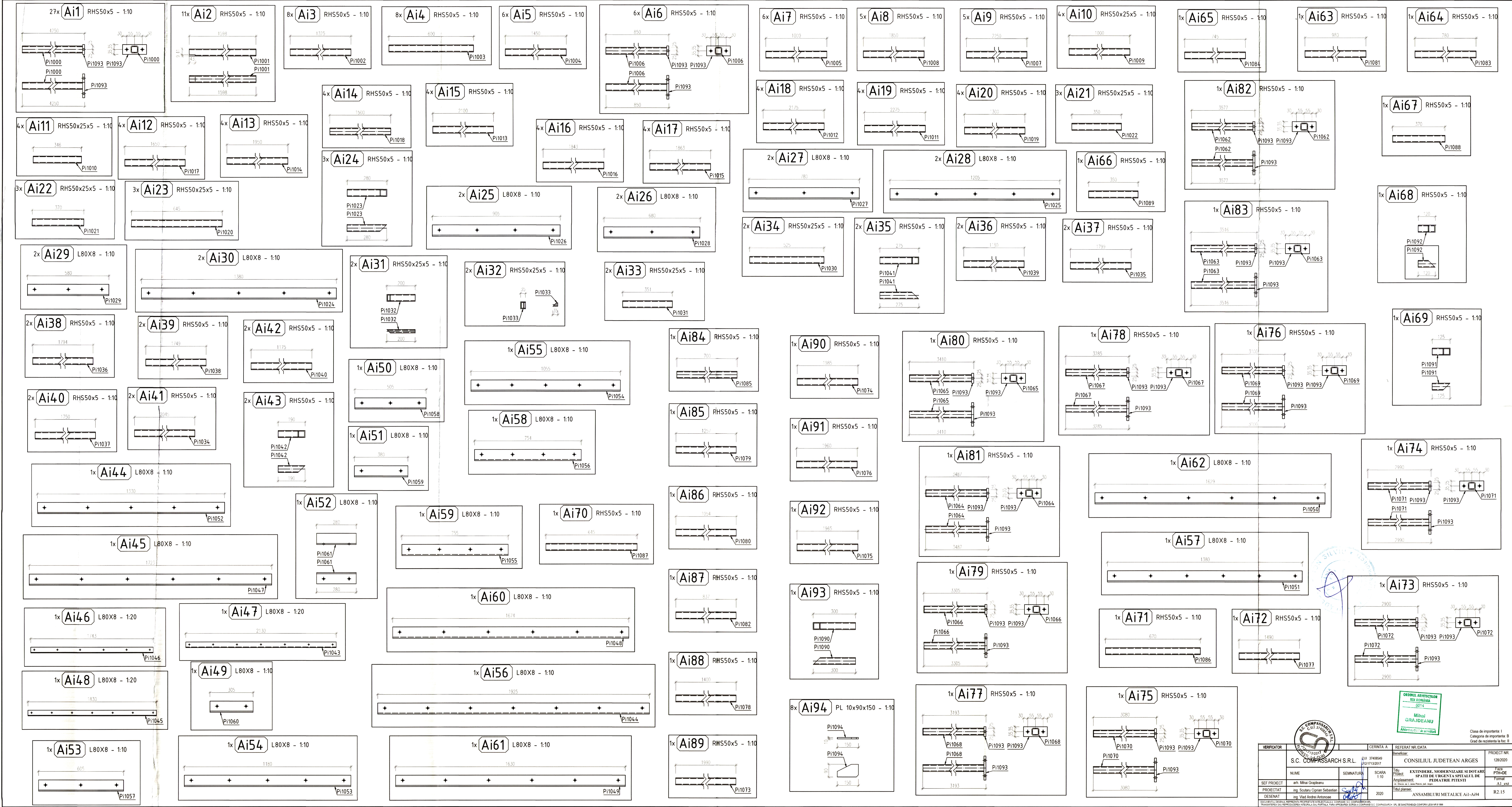


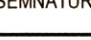
Vedere A-A



VERIFICATOR	CERINTA A	REFERAT NR./DATA	PROIECT NR.
S.C. COMPASSARCH S.R.L.	CUI 37408549 J21713/2017	Beneficiar: CONSILIUL JUDETEAN ARGES	128/2020
NUME	SEMNTURA	SCARA 1:50	Titlu Proiect: EXTINDERE, MODERNIZARE SI DOTARE SPATII DE URGENTA SPITALUL DE PEDIATRIE PITESTI
SEF PROIECT	arh. Mihai Grajdeanu	2020	Forma: A2 ext
PROIECTAT	ing. Scutaru Ciprian Sebastian		R2.14
DESENAT	ing. Vlad Andrei Antonovae		

DOCUMENTUL DESENULUI REPREZINTA PROPRIETATEA INTELLECTUALA A COMPANIEI S.C. COMPASSARCH S.R.L. SI SE SANCTIONEAZA CONFORM LEGII NR. 8/1996
TRANSDUCEREA SAU REPRODUCEREA INTEGRALA SAU PARTIALA, FARA APROBAREA SCRISA A COMPANIEI S.C. COMPASSARCH S.R.L. SE SANCTIONEAZA CONFORM LEGII NR. 8/1996



<div>AS. COMPASSARCH S.R.L. CUI 37408640 A21717132017</div>		CERINTA A		REFERAT NR. DATA		Clasa de importanta: I Categoriza de importanta: B Grad de rezistent la foc II
VERIFICATOR		S.C. COMPASSARCH S.R.L.		Beneficiar: CONSILIUL JUDETEAN ARGES		
NUME		SEMNATURA		SCARA		Faza PRIME Formal AI1 ext
arh. Mihai Grăjdeanu				1:10		
SEF PROIECT		ing. Scutaru Ciprian Sebastian		Titlu Proiect		ANSAMBLURI METALICE AI1-AI94
DESENAT		ing. Vlad Andrei Antonovici		Amplasament la Decizia nr. 1 din 19.04.2017		
CONSILIUL JUDETEAN ARGES		CONSILIUL JUDETEAN ARGES		Titlu planșă: ANSAMBLURI METALICE AI1-AI94		R2.15

